



**LETS MOVE UK**  
SALES & LETTINGS IN BRISTOL  
ONLINE



## 6 Patch Court

Bristol, BS16 7DH

**\*\*Virtual Viewing Tour available on request \*\*** Let your search be over! Secure yourself this 3 bedroom end of terrace home in a cul-de-sac location which is offered for sale with NO ONWARD CHAIN! Built by Bovis Homes this lovely property comprises of entrance hall, cloakroom, lounge, kitchen/diner. To the first floor can be found 3 bedrooms (principle bedroom with en-suite facilities) and a family bathroom. Further benefits include enclosed rear garden and off street parking. Call today for more details and to arrange a viewing.

**Price £264,995**

# 6 Patch Court

Bristol, BS16 7DH



- END OF TERRACE
- CLOAKROOM
- 3 BEDROOMS
- OFF ROAD PARKING
- EN-SUITE
- NO ONWARD CHAIN

Entrance Hall

Cloakroom

Lounge

max 17'11 x 10'06 (max 5.46m x 3.20m)

Kitchen/Diner

13'10 x 9'04 (4.22m x 2.84m)

Landing

Bedroom One

10'04 (into recess) x 8'11 (excluding recess) (3.15m (into recess) x 2.72m (excluding recess))

En-suite

Bedroom Two

max 11'08 x 7'09 max (max 3.56m x 2.36m max)

Bedroom Three

8'03 x 5'11 (2.51m x 1.80m)

Bathroom

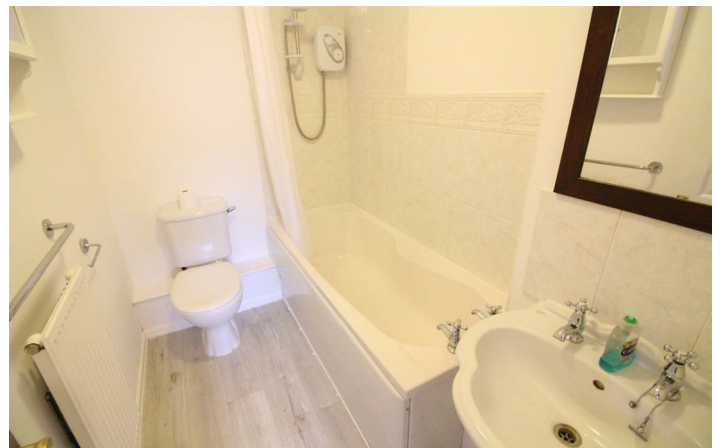
Rear Garden

Parking

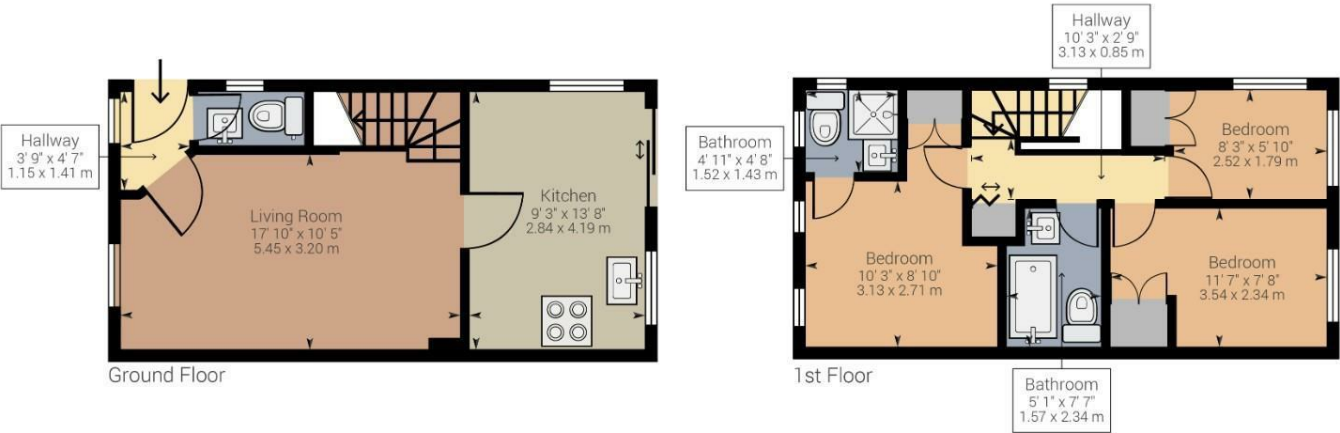


Directions





Floor Plan



Approximate net internal area: 711.54 ft<sup>2</sup> / 66.11 m<sup>2</sup>  
While every attempt has been made to ensure accuracy, all measurements are approximate, not to scale. This floor plan is for illustrative purpose only and should be used as such by any prospective tenant or purchaser.

Powered by Giraffe360

These particulars, whilst believed to be accurate are set out as a general outline only for guidance and do not constitute any part of an offer or contract. Intending purchasers should not rely on them as statements of representation of fact, but must satisfy themselves by inspection or otherwise as to their accuracy. No person in this firms employment has the authority to make or give any representation or warranty in respect of the property.

